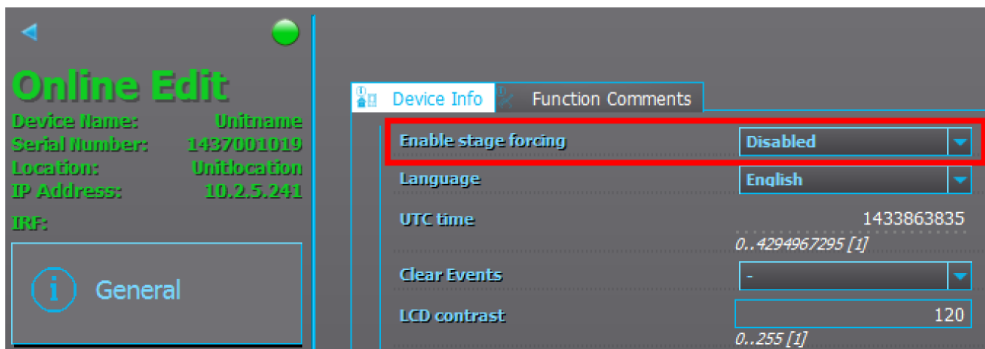


TIP

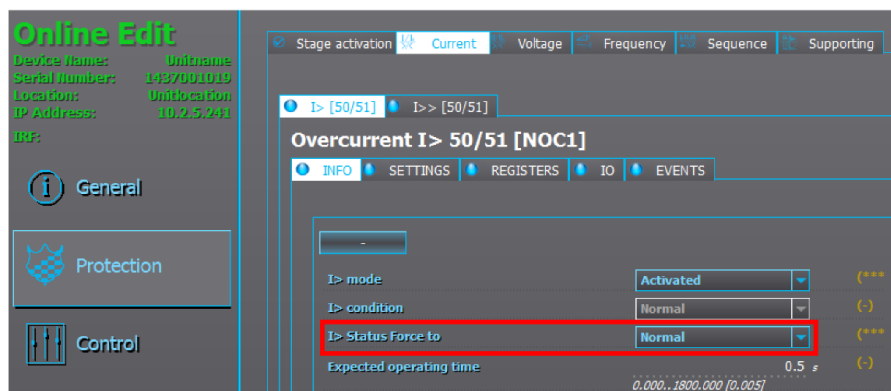
Test events quickly by forcing stages

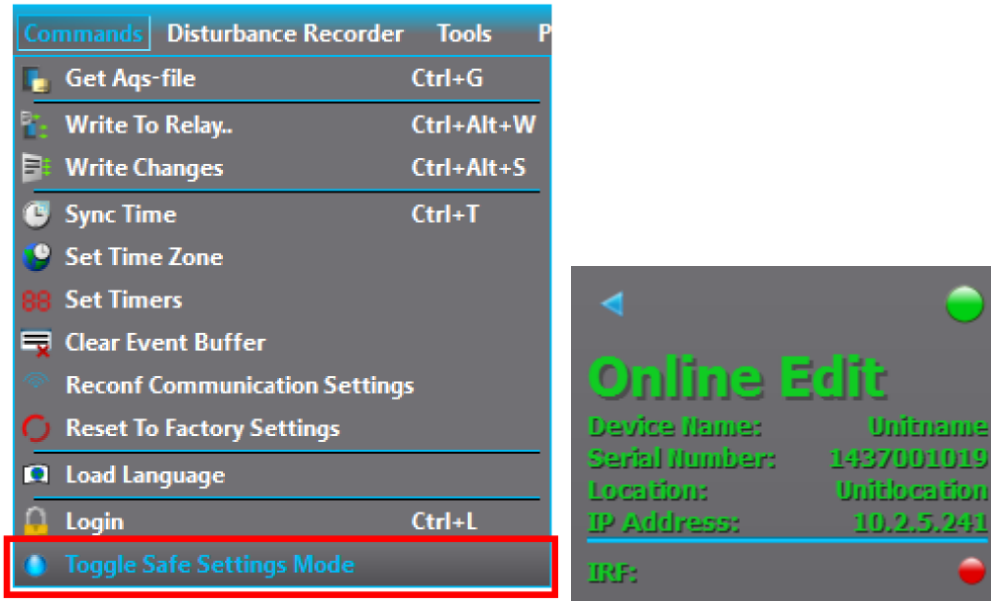
IMPORTANT NOTE: Forcing protection stages might also open the circuit breaker if the protection function has been configured to do so from Trip-event. Safe settings-mode prevents this which is explained at the end of this document.

When testing event signaling to communication it might be time consuming to connect a testing device and induce voltages and current especially if the protection functions have already been commissioned. To test if the RTU receives the signals from the relays without using testing devices like Omicron, using *Stage Forcing* comes in handy.



To start out enable Live Edit-mode and enable stage forcing in General menu. Now the states of the protection functions (Normal, Started, Trip, Blocked etc.) are controlled by the parameter setting in each of the protection functions page (see image below).





If the breaker is closed and opening it is not desired using *Safe settings mode* prevents that from happening. This mode can be enabled/disabled from *Commands* → *Toggle safe settings mode*. When safe settings mode is enabled the active mode is displayed with a skull in the mimic displays top right corner, **SAFE MODE** text next to Live Edit-text and ERROR-LED.



The safe settings mode can be reversed back to normal by repeating *Toggle safe settings mode*. To reset ERROR-LED go to *Monitoring* → *Device Diagnostics* and clear the Internal relay fault message with *Clear Fault status*.