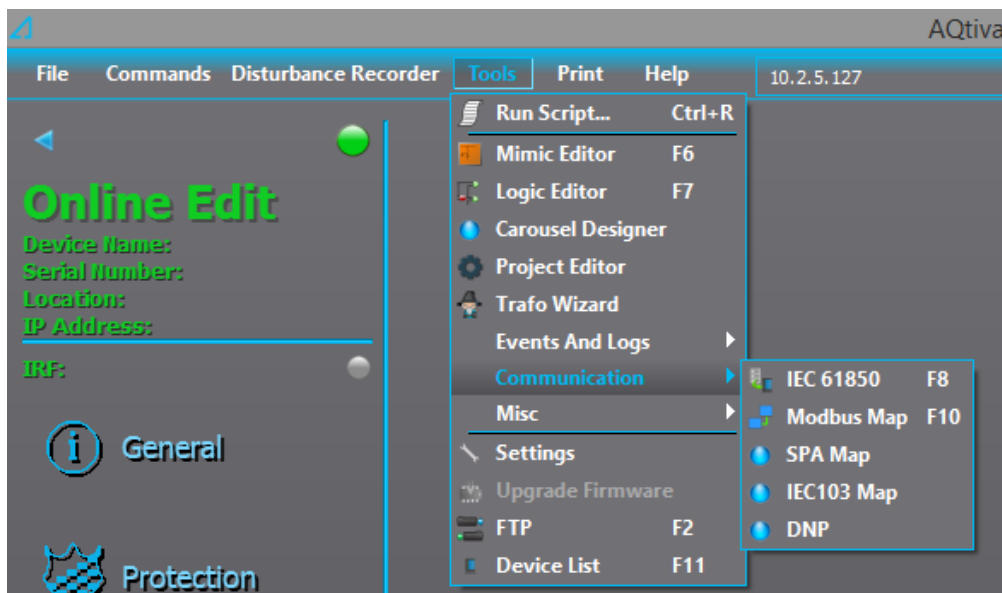


FAQ

Where can I find the signal map for the communication protocol I'm using?

In case you are using one of the following communication protocols (DNP, IEC103, Modbus or SPA) you can find the signal mapping in the relays aqs-configuration file. The aqs file can be loaded and opened with AQtivate-setting tool. The signal maps for all of the communication protocols can be found in *Tools* → *Communication*.



Each of the communication protocols have the option to save the signal maps into a txt files which can be then opened in table format in Excel or similar software.